

JEPPESSEN

JUN 15-90 13-1

FERNANDO DE NORONHA, BRAZIL

NORONHA Radio 125.9

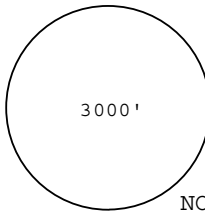
FERNANDO DE NORONHA

DESCENT DELTA 1

VOR RWY 12

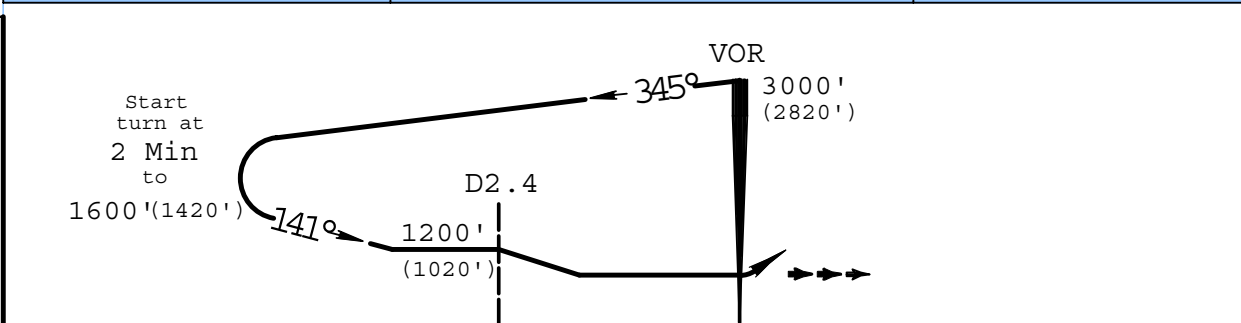
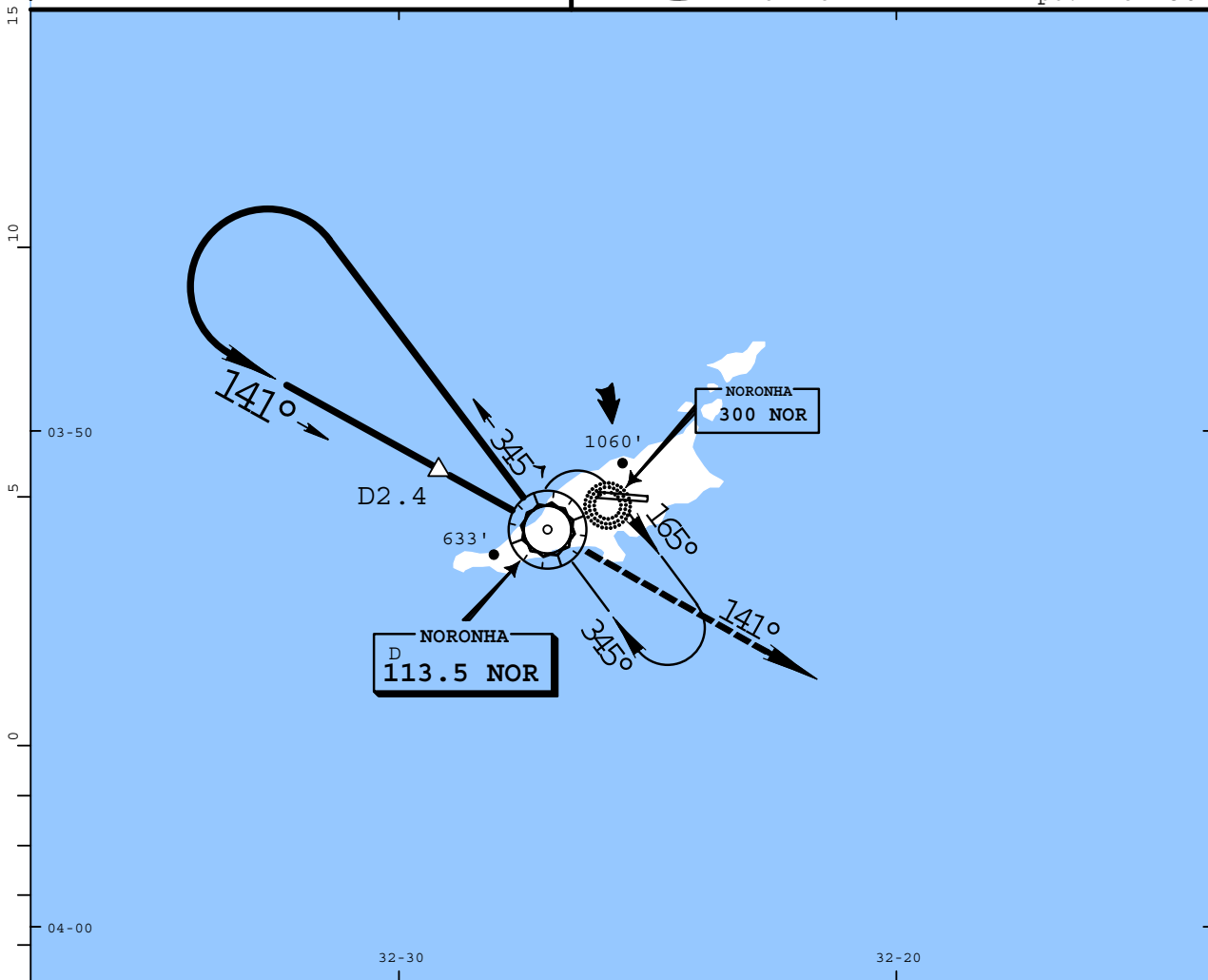
Alt Set: hPa

Trans level: By ATC
Trans alt: 3000'(2820')



MSA
NOR VOR

VOR 113.5 NOR
Apt. Elev 180'



MISSED APPROACH: Climb to 3000' outbound on NOR VOR R-141.

STRAIGHT-IN LANDING RWY 12 CEILING REQUIRED		CIRCLE-TO-LAND	
MDA(H) 1180' (1000')		Landing Rwy 30 Circle in Sector South of Airport	
CEILING-VISIBILITY		Max Kts	MDA(H) CEIL-VIS
A		100	
B		135	
C	1000' - 4800m	180	1180' (1000') 1000' - 4800m
D		205	

Rate of descent on final (feet/min)	650
MAP at VOR	

CHANGES: See other side.

BY ANDRÉ DIAS DE ALBUQUERQUE - FRAJOLEX@IG.COM.BR

FOR SIMULATION ONLY

FOR SIMULATION ONLY

PANSOPS 3