

JEPPESEN

MAR 31-89

16-2

FERNANDO DE NORONHA, BRAZIL

FERNANDO DE NORONHA

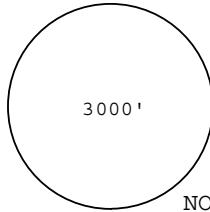
DESCENT ECHO 1

NDB RWY 30

NDB 300 NOR

Apt. Elev 184'

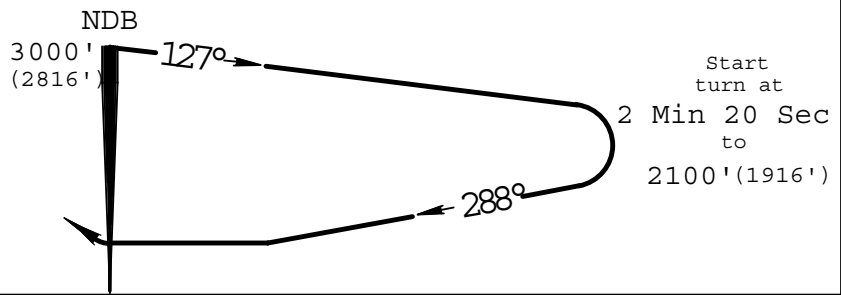
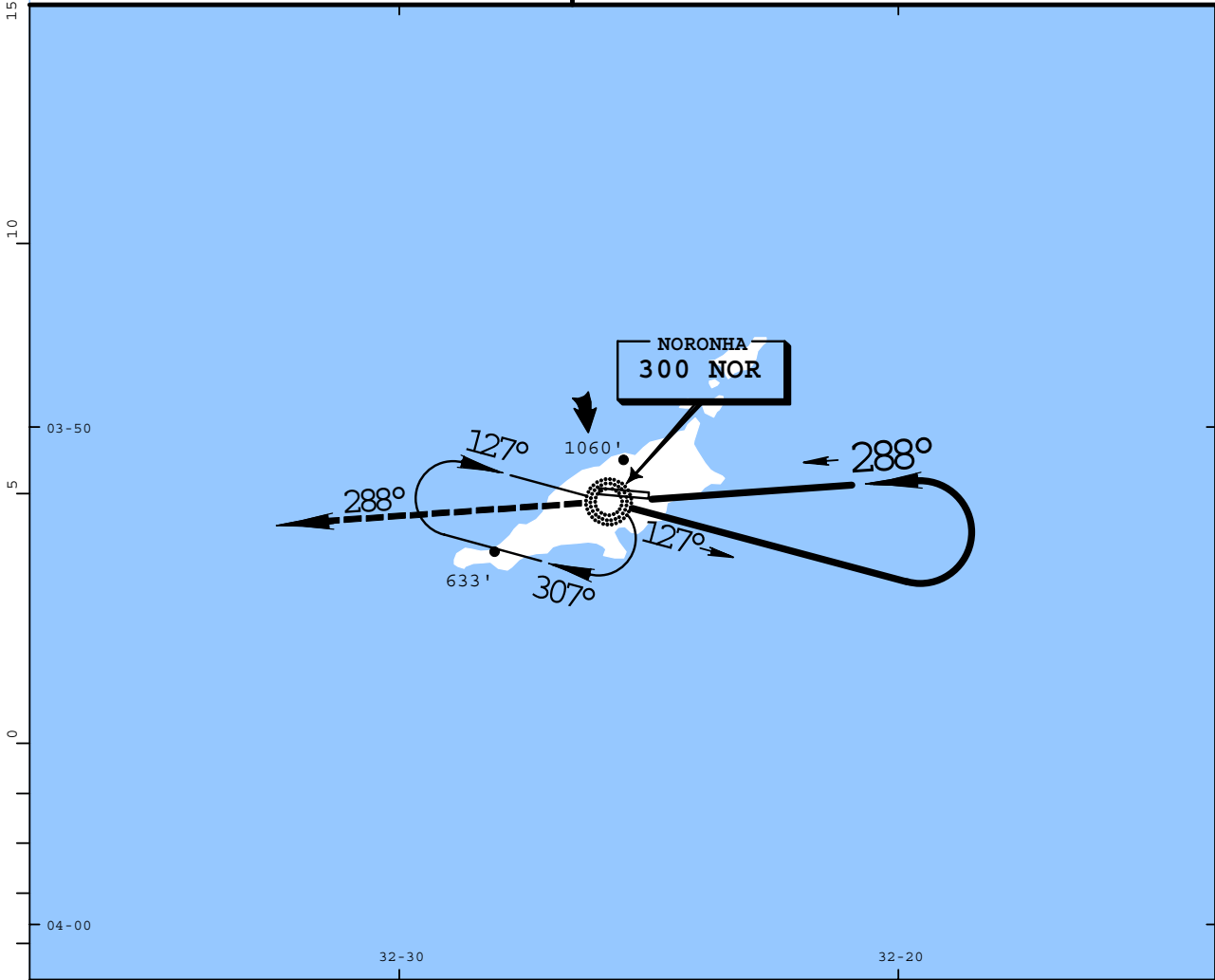
NORONHA Radio 125.9



Alt Set: hPa

Trans level: By ATC
Trans alt: 3000'(2816')

MSA
NOR NDB



184'
MISSED APPROACH: Climb to 3000' on 288° bearing from NOR NDB.

STRAIGHT-IN LANDING RWY 30		CEILING REQUIRED	CIRCLE-TO-LAND	
MDA 1360'(1176')			Landing Rwy 12 Circle in Sector South of Airport	
CEILING-VISIBILITY			MDA	CEIL-VIS
A	1200'-2000m		A	1360'(1176') 1200'-2000m
B	1200'-2400m		B	1360'(1176') 1200'-2400m
C	1200'-4800m		C	1360'(1176') 1200'-4800m
D		D		

Rate of descent on final (feet/min)	700
MAP at NDB	

CHANGES: See other side.

BY ANDRÉ DIAS DE ALBUQUERQUE - FRAJOLEX@IG.COM.BR

FOR SIMULATION ONLY

FOR SIMULATION ONLY

PANS OPS 3