

JEPPESEN

MAR 31-89

16-1

FERNANDO DE NORONHA, BRAZIL

NORONHA Radio 125.9

FERNANDO DE NORONHA

DESCENT ECHO 2

NDB RWY 12

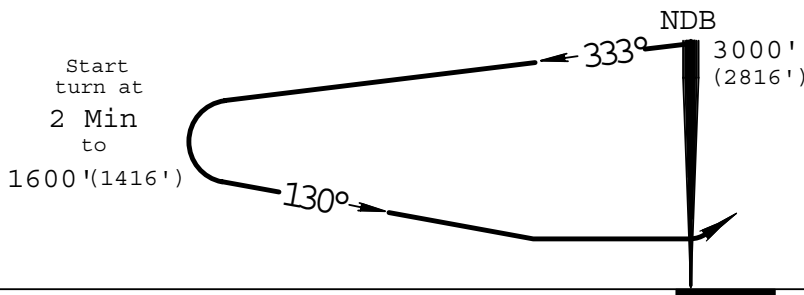
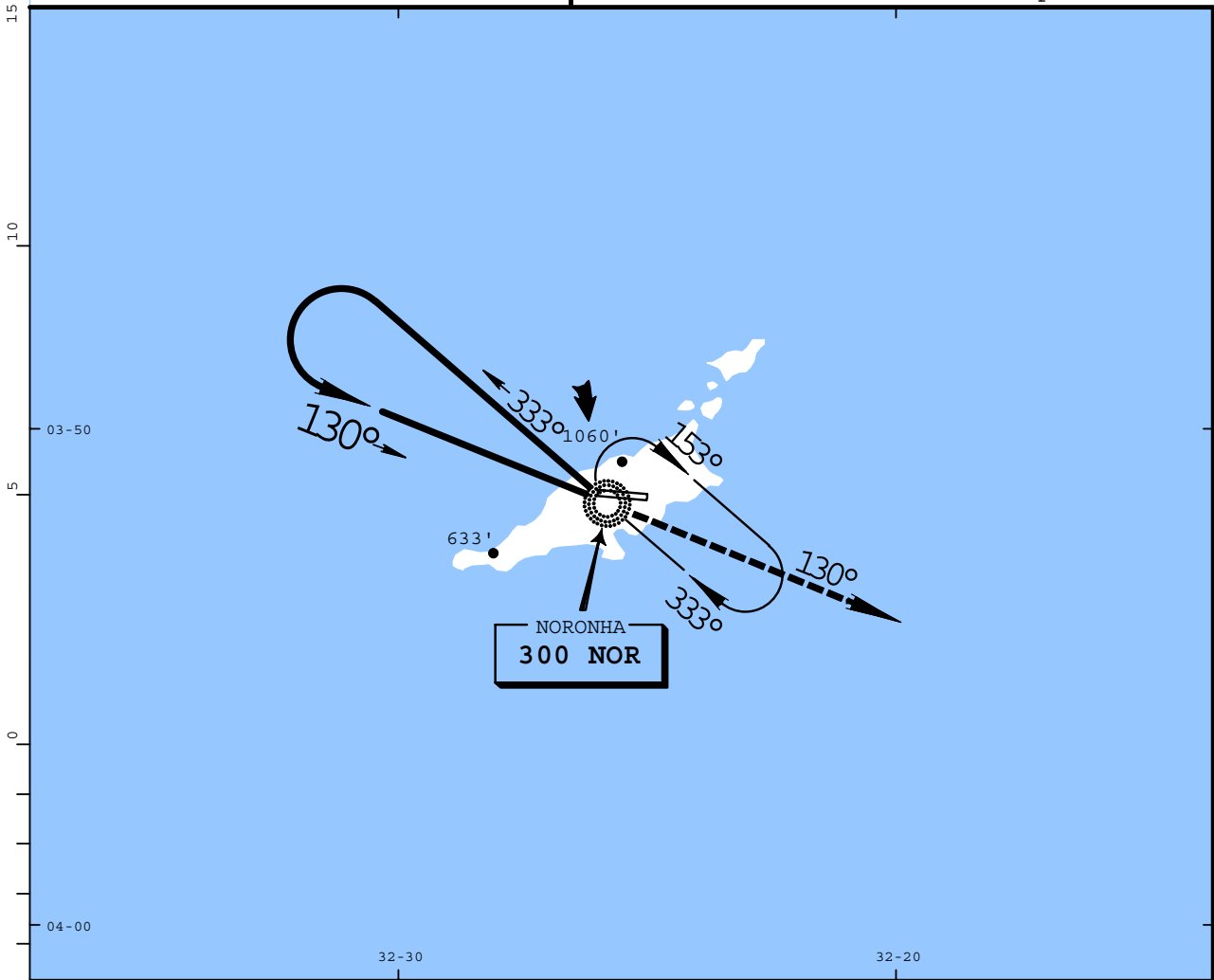
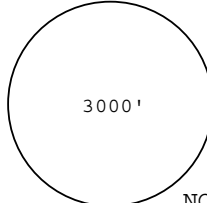
NDB 300 NOR

Alt Set: hPa

Trans level: By ATC
Trans alt: 3000' (2816')

MSA
NOR NDB

Apt. Elev 184'



MISSED APPROACH: Climb to 3000' on 130° bearing from NOR NDB.

STRAIGHT-IN LANDING RWY 12 **CEILING REQUIRED** CIRCLE-TO-LAND

MDA 1360' (1176')

Landing Rwy 30
Circle in Sector South of Airport

CEILING-VISIBILITY		MDA		CEIL-VIS	
A	1200' - 2000m	1360' (1176')	1200' - 2000m	A	1360' (1176') 1200' - 2000m
B	1200' - 2400m	1360' (1176')	1200' - 2400m	B	1360' (1176') 1200' - 2400m
C	1200' - 4800m	1360' (1176')	1200' - 4800m	C	1360' (1176') 1200' - 4800m
D					

Rate of descent on final (feet/min)	500
MAP at NDB	

CHANGES: Descent name.

BY ANDRÉ DIAS DE ALBUQUERQUE - FRAJOLEX@IG.COM.BR

FOR SIMULATION ONLY

FOR SIMULATION ONLY

PANS OPS 3