

TRANS LEVEL: BY ATC
TRANS ALT: 3000'

ALOV, BANG, EDER, SIRI DEPARTURES

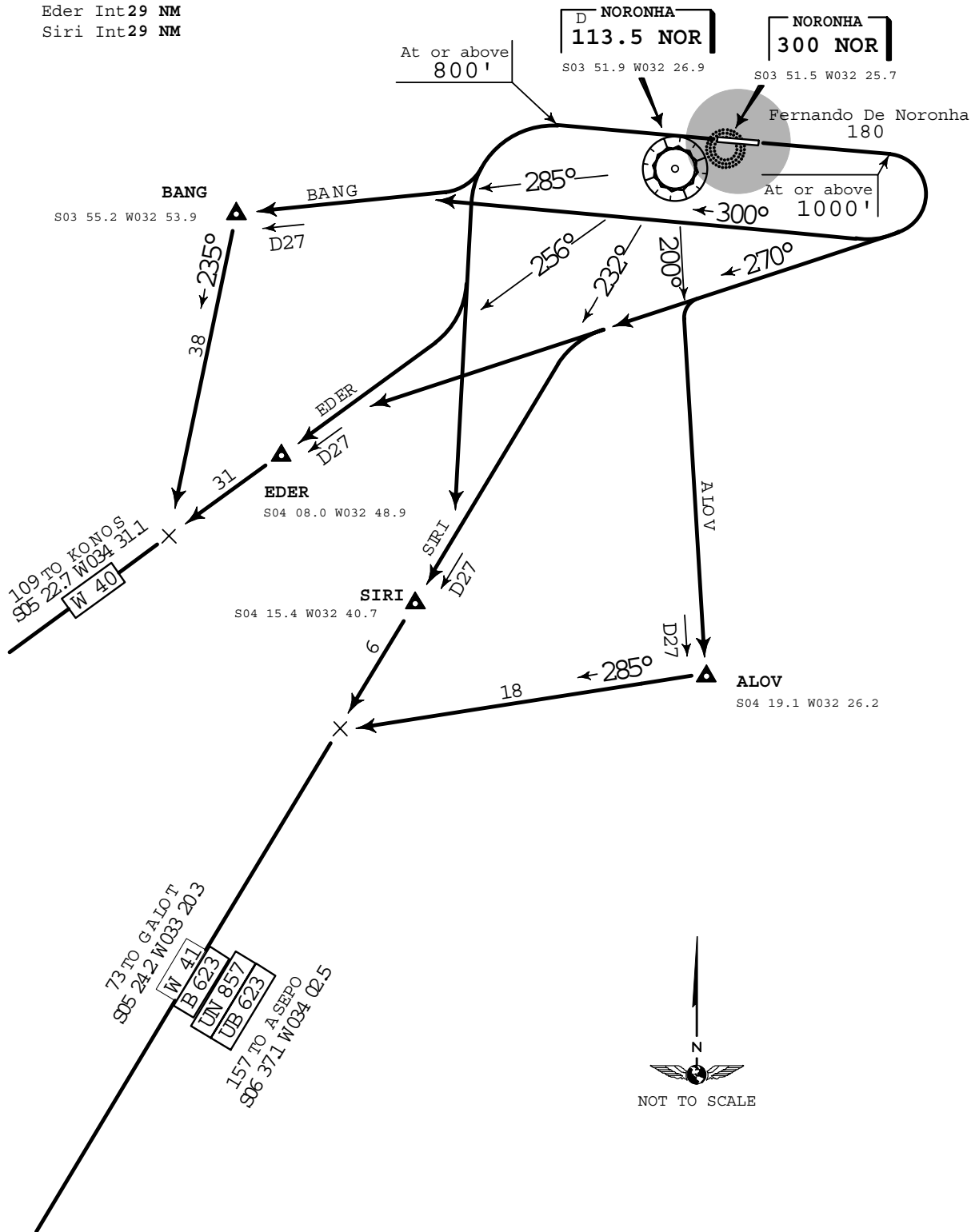
This SID requires take-off minimums of:
Ceiling 1200', visibility 2000m and
the following minimum climb gradient.

Gnd speed-Kts	75	100	150	200	250	300
3.3% V/V(fpm)	250	350	500	700	850	1000

ATTENTION for the possibility of spatial disorientation.

Direct distance from Fernando De Noronha Apt to:

- Alov Int 28 NM
- Bang Int 29 NM
- Eder Int 29 NM
- Siri Int 29 NM



FOR SIMULATION ONLY

FOR SIMULATION ONLY